

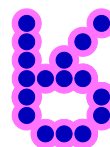


U of U/Bikes for Kids Omnium

Hosted by the U of U and Bikes for Kids Utah

Held under USAC permit #2010-478 | utahcycling.org | bikesforkidsutah.com

UCA Points Series Event



bikes FOR kids

Electric Park Criterium – Friday, March 26:

Directions/Course: Electric Park criterium at 3003 N. Thanksgiving Way, Lehi, UT. From I-15 take Exit #284 heading West. Make a left on Thanksgiving Way then left on Crooked St. Electric Park is on the right. Course is 1 mile (1.6 km) with start/finish in Electric Park near the pavillion.

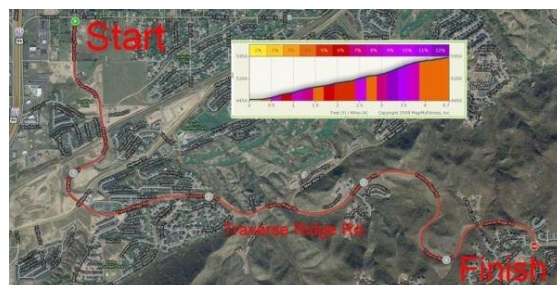
Category	Start	Length	Category	Start	Length
Men 4/5	12:00 PM	45 min	Men 3	2:55 PM	50 min
Women 4/Masters	12:55 PM	25 min	Men Pro/1/2	3:55 PM	75 min
Jr Men/Women 10-12, 13-14, 15-16, 17-18	1:30 PM	20 min	Masters Men A 35+/45+	5:20 PM	45 min
Women 1/2/3	2:00 PM	45 min	Masters Men B/55+	6:15 PM	40 min



Bikes for Kids Utah Hill Climb TT - Saturday, March 27:

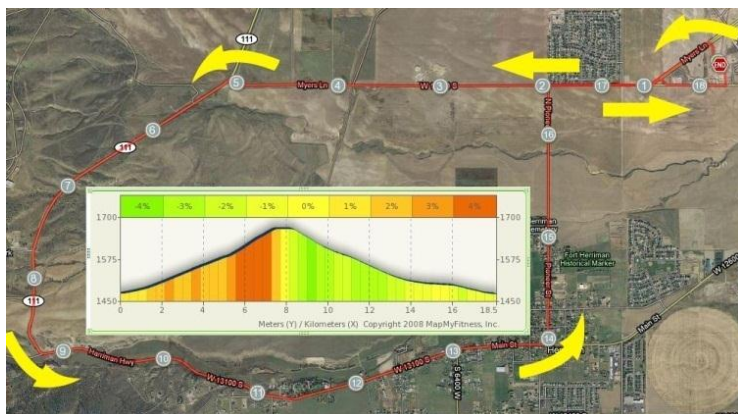
Directions/Course: Bangert Pkwy. at 13800 S., Draper, UT. Head East off exit #289 from I-15 to 13800 S. The climb travels up Traverse Ridge Rd. and Deer Ridge Dr. The four-mile (6.4 km) time trial course has an elevation gain of more than 1,300 ft (396 m) with up to 12 percent grades.

Racers at 30s intervals		Category	Start
Category	Start	Women 1/2/3	Follow ing
Men 4/5	8:30 AM	Men 3	Follow ing
Master Men B	Follow ing	Men Pro/1/2	Follow ing
Jr Men/Wm 10-12, 13-14, 15-16, 17-18	Follow ing	Masters Men B/55+	Follow ing
Women 4/Masters	Follow ing	Masters Men A 35+/45+	Follow ing
		All non-licensed/charity (est. 11:00 AM start)	Follow ing in alpha order by last name every 30s



Daybreak Circuit Race – Saturday, March 27:

Directions/Course: Daybreak Utah. To get to the start/finish from the hill climb start line, take Bangert Hwy west to 11400 S. (about 8 miles), turn left on 11400 S., go through two roundabouts to Grandville Ave. Turn left on Grandville, right on Currant Dr. and right again on Alexandria Dr. The course starts at the Early Light Academy (large blue/gray building) at 11709 S. Vadiana Dr. then goes west along Daybreak Pkwy and 11800 S. where racers will make a left onto U-111. The course turns onto Herriman Hwy (13100 S.) to Pioneer St. (6000 W.) then left on Pioneer St. and then right back onto 11800 S. To finish the circuit, racers make a right onto 5415 W. and then a quick left back onto Vadiana Dr. for the finish in front of the school. Note that the course is open to traffic, the yellow line rule is in effect, and dropped riders must obey all traffic laws. Overflow parking at the LDS chapel on Grandville Ave.



Category	Start	Distance
Men Pro/1/2	1:00 PM	84 miles - 7 laps
Men 3	1:10 PM	60 miles - 5 laps
Men 4/5	1:20 PM	36 miles - 3 laps
Masters Men A 35+/45+	3:15 PM	60 miles - 5 laps
Women 1/2/3	3:50 PM	48 miles - 4 laps
Masters Men B/55+	5:00 PM	36 miles - 3 laps
Women 4/Masters	5:10 PM	24 miles - 2 laps
Jr Men/Women 10-12, 13-14, 15-16, 17-18	5:20 PM	12 miles - 1 lap

Overall Prizes (points based)			
Men Pro/1/2	Cash	Masters Men B/55+	Prizes
Men 3	Cash	Women 1/2/3	Cash
Men 4/5	Prizes	Women 4/Masters	Prizes
Masters Men A 35+/45+	Cash	Juniors - all	Prizes

Registration: www.sportsbaseonline.com Registration is \$25 per event or \$65 for all three before March 1, 2010. After March 1, registration is a flat \$25 per event. Collegiate cycling discounts available with collegiate license. Packet pickup closes 30 minutes prior to each event. On-site registration is available before Stage 1 and Stage 3 only, it closes one hour before the events. Given the early start time of stage 2, there is no on-site registration before the stage 2 time trial.

Contact: Contact Brad Duncan at bradleeduncan@gmail.com for more information or questions.

